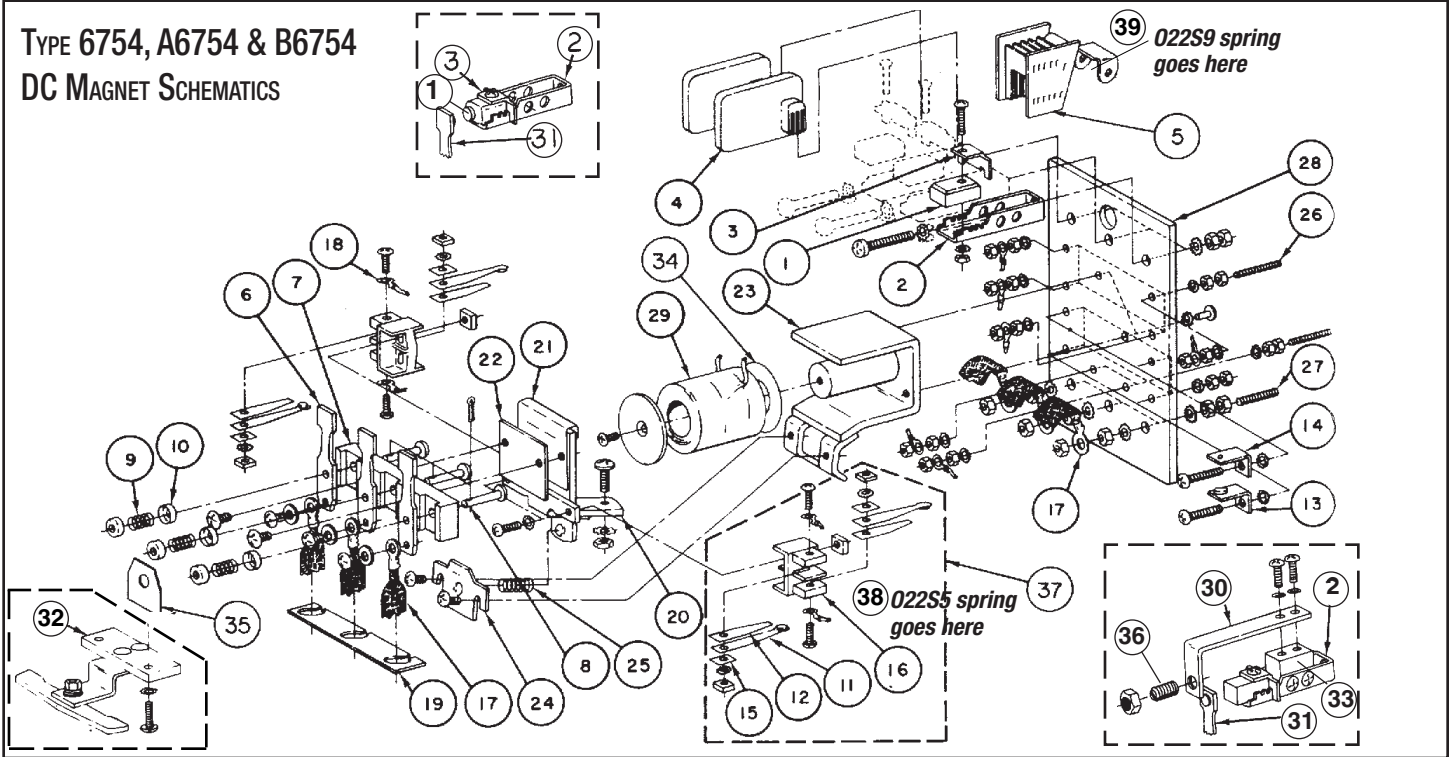


### TYPE 6754, A6754 & B6754 DC MAGNET SCHEMATICS



### REPLACEMENT PARTS FOR OTIS TYPE 6754, A6754 & B6754 RELAYS

Key no.	Adams part no.	Otis part no.	Description
1	<b>O22D1</b> <b>O22D2</b> <b>O22D3</b>	154AB1 154AB2 150AL3	Carbon contact Graphite contact Copper contact with 3/8" dia. silver tip
2	<b>O22K1</b>	A179AK3	Carbon holder with screw
3	<b>O22K2</b>	A336BR1	Carbon clamp
4	<b>O22H1</b>	276H1	Bakelite arc barrier
5	<b>O22H2</b>	6534B1	Arc deflector
6	<b>O22C1</b> <b>O22C3</b>  <b>O22C6</b>  <b>O22C11</b>	153Z1 150Y4/Y8  153AE8  153AE10	Movable contact w/o tip Movable contact with 3/8" dia. silver tip Movable contact with 7/16" sq. silver tip Movable contact with 3/8" dia. silver tip and 7/16" sq. silver tip on reverse
7	<b>O22B1</b>	306BR1	Base for movable contacts
8	<b>O22R1</b>	141Y1	1" L rivet with cotter pin
9	<b>O22S1</b> <b>O22S6</b>	90TA3 90YA25	Compression spring (making) Compression spring (break)
10	<b>O22W1</b>	133A6	Spring seat washer
11	<b>O21C4</b>	150P4	Movable contact for auxiliary
12	<b>O21C5</b>	93D2	Support blade for auxiliary
13	<b>O22C4</b>	150C13, 152AN1	Auxiliary stationary contact
14	<b>O22C5</b>	150C14, 152AN2	Auxiliary stationary contact
15	<b>O22W2</b>	128H1	Washer
16	<b>O22B2</b>	306CJ1	Auxiliary contact base
17	<b>O546B</b>	176KA13	Copper braid connector

Key no.	Adams part no.	Otis part no.	Description
18	<b>O521A</b>	175J88	3 3/4" L insulated connector
19	<b>O22T1</b>	464BJ2	Fiber separator, 3 1/8" x 5/8"
20	<b>O22A2</b>	A245AE1	Magnet armature
21	<b>O22A3</b>	384FS1	Brass guard
22	<b>O22A4</b>	384EW2	Phenolic guard
23	<b>O22A1</b>	A374CP1	Frame assembly with magnet core and washer
24	<b>O22A5</b>	A477BL1	Stop
25	<b>O22S2</b> <b>O22S3</b> <b>O22S7</b> <b>O22S8</b>	90VA16 90EB5 90KB14 90VA15	Kickoff spring Kickoff spring for 6754Y switch Kickoff spring (breaking contact) Kickoff spring (for 2M/1B switch)
26	<b>O21P2</b>	99G1	Terminal stud, 1 3/8" L
27	<b>O22P3</b>	99G2	Terminal stud, 2" L
28	<b>O22P1</b>	A433Z1	Panel
29	<b>Hxxxx</b>	222xxx	Coil (see pages 216-217)
30	<b>O22K3</b>	179AM1	Stationary contact holder
31	<b>O22C3</b>	150Y4	Movable contact with 3/8" dia. silver tip
32	<b>O22J1</b>	6543C	Interlock ("airplane")
33	<b>O22K3B</b>	306CP1	Insulator
34	<b>O22A6</b>	129BR2	Phenolic washer for coil
35	<b>O21T1</b>	102DA1	I.D. tag
36	<b>O22D4</b>	150W6	Threaded contact with 3/8" dia. silver tip and jamb nut
37	<b>O22BA1</b>  <b>O22BA2</b>	6810A1  6810A3	Auxiliary contact assembly w/o coil spring Auxiliary contact assembly with coil spring
38	<b>O22S5</b>	90LA11	Compression spring for auxiliary contact assembly
39	<b>O22S9</b>	90PA4	Compression spring for arc deflector