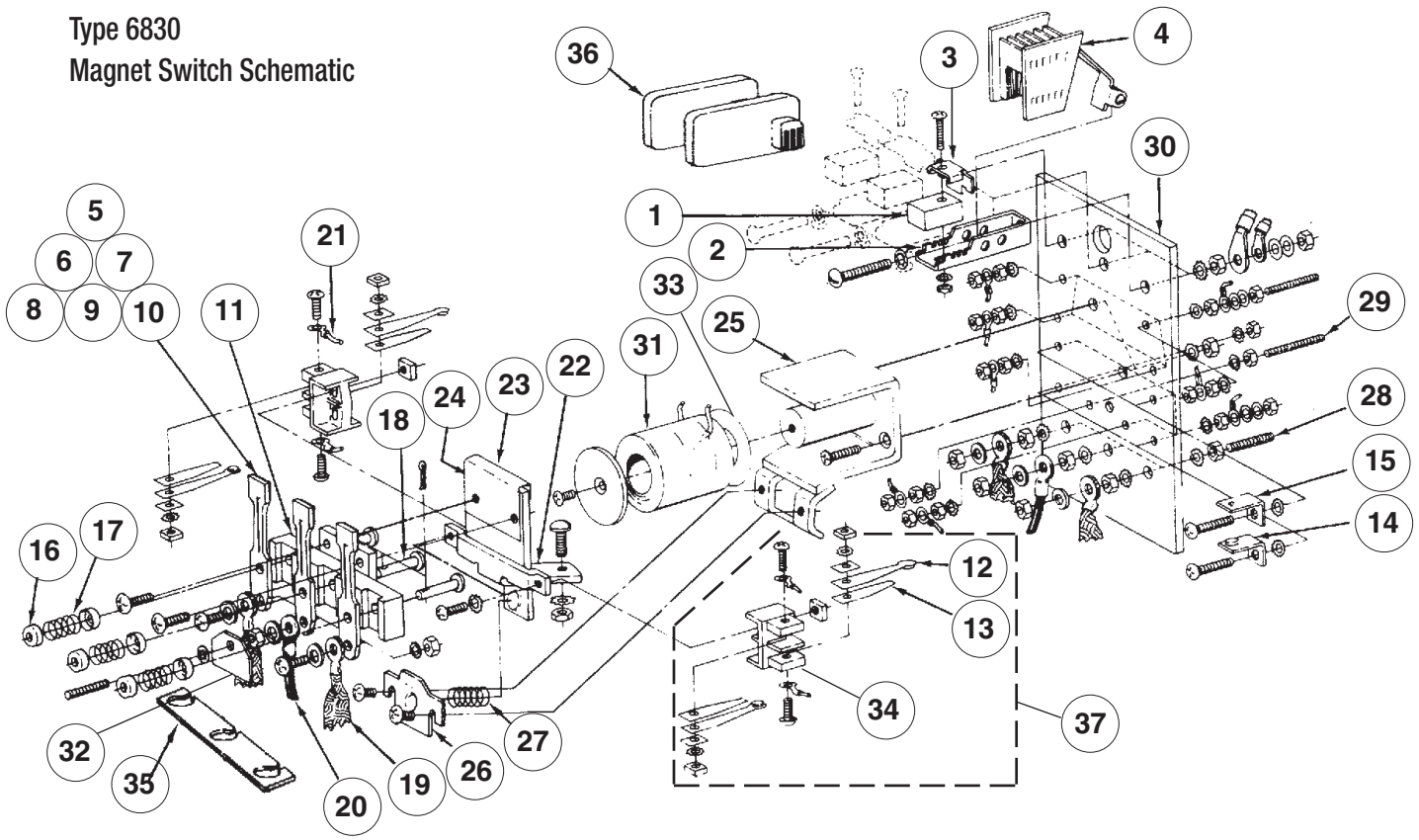


Type 6830  
Magnet Switch Schematic



### REPLACEMENT PARTS FOR OTIS TYPE 6830 RELAYS

Key no.	Adams part no.	Otis part no.	Description
1	<b>O23D1</b>	154C1	Carbon contact
	<b>O23D2</b>	154C2	Metal/graphite contact
	<b>O23E1</b>	150AK3	Copper contact with 1/2"-dia. silver contact (not shown)
	<b>O23E2</b>	150AE5	Copper contact with 5/8"-sq. silver contact (not shown)
2	<b>O23K1X</b>	179P2	Carbon holder w/o screw, for blowout
	<b>O23K1</b> <b>O23K2</b>	179P3 A336Z1	Carbon holder w/mounting screw Carbon clamp
3	<b>O23H1</b> <b>O23C1</b> <b>O23C2</b>	6313A1 153B1 —	Arc deflector Contact arm w/o contact, 4 3/16"L Contact arm with 1/2"-sq. silver contact; 4 3/16"L
4	<b>O23C3</b>	—	Contact arm with 1/2"-dia. silver contact; 4 3/16"L
5	<b>O23C4</b>	150Y2, Y5	Contact arm with 3/8"-dia. silver contact; 4 3/16"L
6	<b>O23C5</b>	153AE7	Contact arm, 1/8" offset; 4 3/16"L; includes 5/8"-sq. copper contact
	<b>153AG6</b>	153AG6	Same as O23C5, w/o offset
7	<b>O23C6</b>	150AK2	Contact arm with 1/2"-dia. silver contact, 1/8" offset; 4 3/16"L
8	<b>O23B1</b>	306CL1	Base, 1" x 9/16" x 4 1/16"L
9	<b>O24C3</b>	93A2	Movable auxiliary contact arm
10	<b>O23C7</b>	93AD1	Contact backing spring
11	<b>O22C4</b>	150C13	Stationary auxiliary contact

Key no.	Adams part no.	Otis part no.	Description
12	<b>O22C5</b>	150C14	Stationary auxiliary contact
13	<b>O23W1</b>	133A1	Spring seat washer
14	<b>O23S1</b>	90DB4	Compression spring
15	<b>O23R1</b>	141Y2	Rivet, 1 1/8"L
16	<b>O545B</b>	176KA10	Copper braid connector, 7"L
	<b>O530</b>	175H1	Connector (alternate), 7 1/2"L
		175J150	Silicone connector, 4 1/4"L
17	<b>O23A2</b>	A245AA1	Armature magnet
18	<b>O23A3</b>	384FX1	Brass guard
19	<b>O23A4</b>	384EW1	Fiber guard
20	<b>O23A1</b>	A374FM2	Magnet frame w/core plus 131BD1 washer
21	<b>O23A5</b>	A477BP1	Stop
22	<b>O23S3</b>	90BB8	Compression spring
23	<b>O21P2</b>	99G1	Terminal stud, 1 3/8"L
24	<b>O22P3</b>	99G2	Terminal stud, 2"L
25	<b>O23P1</b>	433AB1	Switch panel
	<b>Hxxxx</b> <b>O21T1</b>	222--- 102DA1	Coil (see coils, p. 226-227) I.D. tag
26	<b>O23A6</b>	129BR3	Phenolic washer for coil
27	<b>O22B2</b>	306CJ1	Base for auxiliary contact
28	<b>O23T1</b>	464BJ3	Fiber separator
29	<b>O23H2</b>	276B1	Arc barrier
30	<b>O23BA1</b>	6810A2	Auxiliary contact assembly without coil spring
	<b>O23BA2</b>	6810A5	Auxiliary contact assembly with coil spring (not shown)