



GateKeeper® 3D 100

The GateKeeper 3D 100 sensor is used to enhance elevator door protection systems by providing sensor detection in front of the elevator cab entrance.

It is used with existing two-dimensional (2D) elevator door protection systems such as light curtains, single-beam sensors or mechanical edges to provide three-dimensional (3D) protection. The GateKeeper 3D 100 can be used for new elevator installations or for modernization of existing elevator systems.

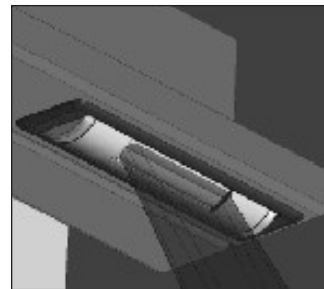
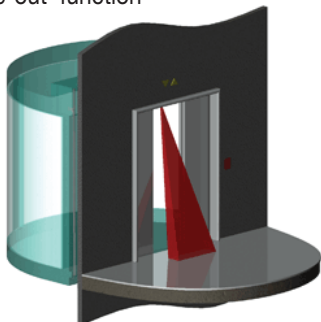
By using "Time of Flight" (TOF) technology, the GateKeeper 3D 100 sensor can detect the difference between a person or object approaching the elevator cab and a stationary person or object in the elevator cab entrance area.

The sensor's compact, low profile housing is optimized for difficult mounting locations, including narrow elevator cab transoms.

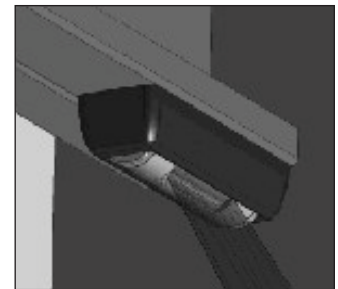
- Personal elevators
- Freight elevators
- Hospital elevators

Features

- automatic door recognition and self-calibration
- distance / movement data ensures reliable operation
- very easy installation & integration
- compact design for flush or surface mounting
- intelligent 'Time-out' function



Flush mounting details



Surface mounting details

Technical Data 3D Sensor

Application

Operating Range	20" to 118"
Active area at 2 m distance	8" x 35"
Number of pixels	768 (8 x 96)
Wave length	840 nm
Relative distance resolution	2" (8" above floor)

Connection Cable

Cable type and color	PVC, black
Cable length	20"
Connection cable	110"
Connecting plug	M8

4 Wires

Brown	+10... 30VDC
Blue	GND (0 V)
Black	Output, PNP
White	Time-out selector (18 s or infinity)

Electrical

Supply Voltage Usp	+10... 30VDC (typ. 24VDC)
Ripple at supply voltage	10%
Current consumption (at 24V)	<200 mA
Resistive load	50mA
Capacitive load	100 nF
Output type	1 x PNP
Output logic	Low = object, high = no object
Optical illumination LED power	<0.5 W
Indication LED (status)	Red (object detected = on)
Response time	Typ. < 200 ms
Recalibration time	< 200 ms

Mechanical

Dimensions (w x h x d) in mm	4" x 1" x 0.9"
Mechanical adjustment range	+ or - 30° (continuously)
Enclosure rating	IP54
Temperature rating	-4° ... 140° F (-20° ... + 60° C)
Housing material	Aluminum, Polycarbonate

GATEKEEPER 3D 100 ORDERING INFORMATION

Adams part no.	Description
A8503D100	3D Door Sensor