

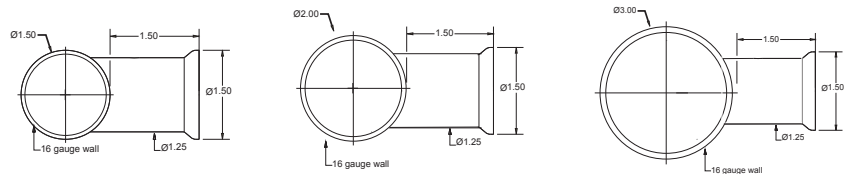
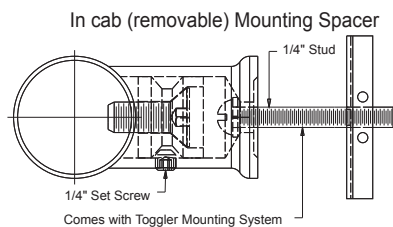
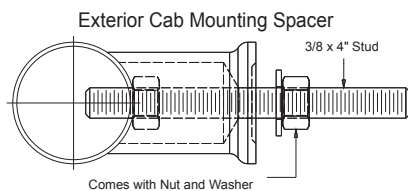
ROUND HANDRAILS

STAINLESS • BRONZE • BRASS



Code Compliant: Meets ADA accessibility requirements with our universal 1 1/2" diameter handrails. The highest quality of precision CNC machined components and dedication to customer satisfaction make this product a proven winner every time. Manufactured directly from your measurements and specifications provided on our easy-to-use worksheet, our accuracy matches your measurements and your standards.

Options & Features



Optional End Styles



ROUND HANDRAIL ORDERING INFORMATION

Part #	Diameter & Description	Part #	Diameter & Description
AHR1500S	1.5" dia. stainless #4 brushed	AHR2000S	2" dia. stainless #4 brushed
AHR1500SP	1.5" dia. stainless #8 polished	AHR2000SP	2" dia. stainless #8 polished
AHR1500YB	1.5" dia. yellow brass #4 brushed	AHR2000YB	2" dia. yellow brass #4 brushed
AHR1500YBP	1.5" dia. yellow brass #8 polished	AHR2000YBP	2" dia. yellow brass #8 polished
AHR1500B	1.5" dia. bronze #4 brushed	AHR2000B	2" dia. bronze #4 brushed
AHR1500BP	1.5" dia. bronze #8 polished	AHR2000BP	2" dia. bronze #8 polished
AHR1500C	1.5" dia. copper #4 brushed	AHR2000C	2" dia. copper #4 brushed
AHR1500CP	1.5" dia. copper #8 polished	AHR2000CP	2" dia. copper #8 polished
AHR1500DX	1.5" dia. s/s diamond-tex	AHR3000S	3" dia. stainless #4 brushed only